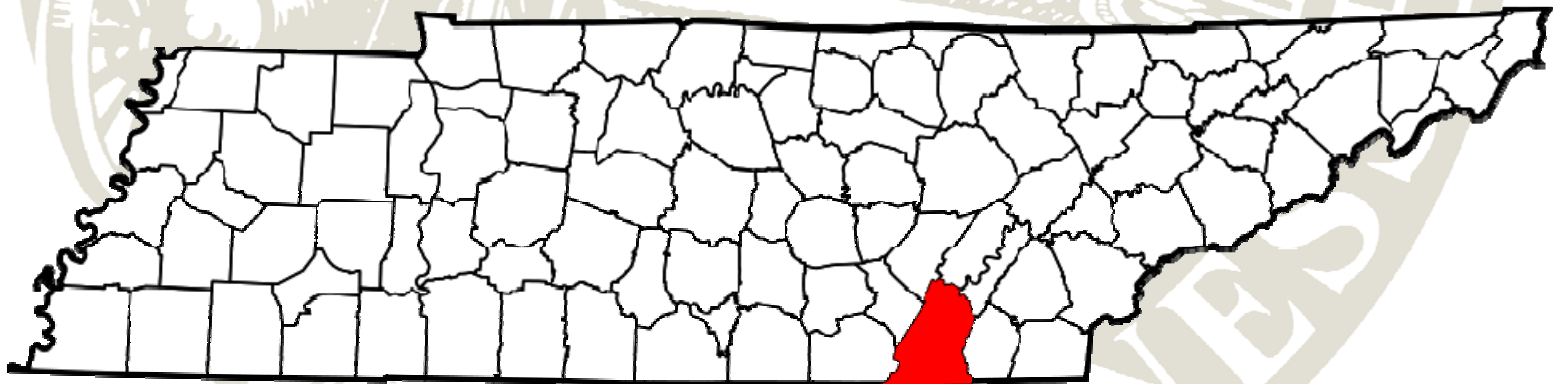


A Brief Overview



Hamilton County Government

**Hamilton County
became the 43rd of
Tennessee's
95 counties in 1819.**



Municipal Populations

•Hamilton County	336,463
•Chattanooga	167,674
•East Ridge	20,979
•Soddy Daisy	12,714
•Red Bank	11,651
•Collegedale	8,282
•Signal Mountain	7,554
•Lakesite	1,940
•Walden	1,898
•Lookout Mountain	1,832
•Ridgeside	390

Hamilton County constitutionally provides basic services, which include:

- **Education**
- **Unincorporated Roads**
- **Law Enforcement**
- **Emergency Services**
- **Courts System**
- **Medical Examiner**
- **Jails**
- **Elections**
- **Health Services**
- **Constitutional Offices**
- **And Other Services**

The background of the slide features a large, faint, circular seal of Hamilton County, Tennessee. The seal contains the text "HAMILTON COUNTY" at the top and "TENNESSEE" at the bottom. In the center of the seal is an illustration of a landscape with a river, a bridge, and a city. The words "OFFICIAL SEAL" are also visible within the seal's border.

Hamilton County's Budget is

\$625,825,087

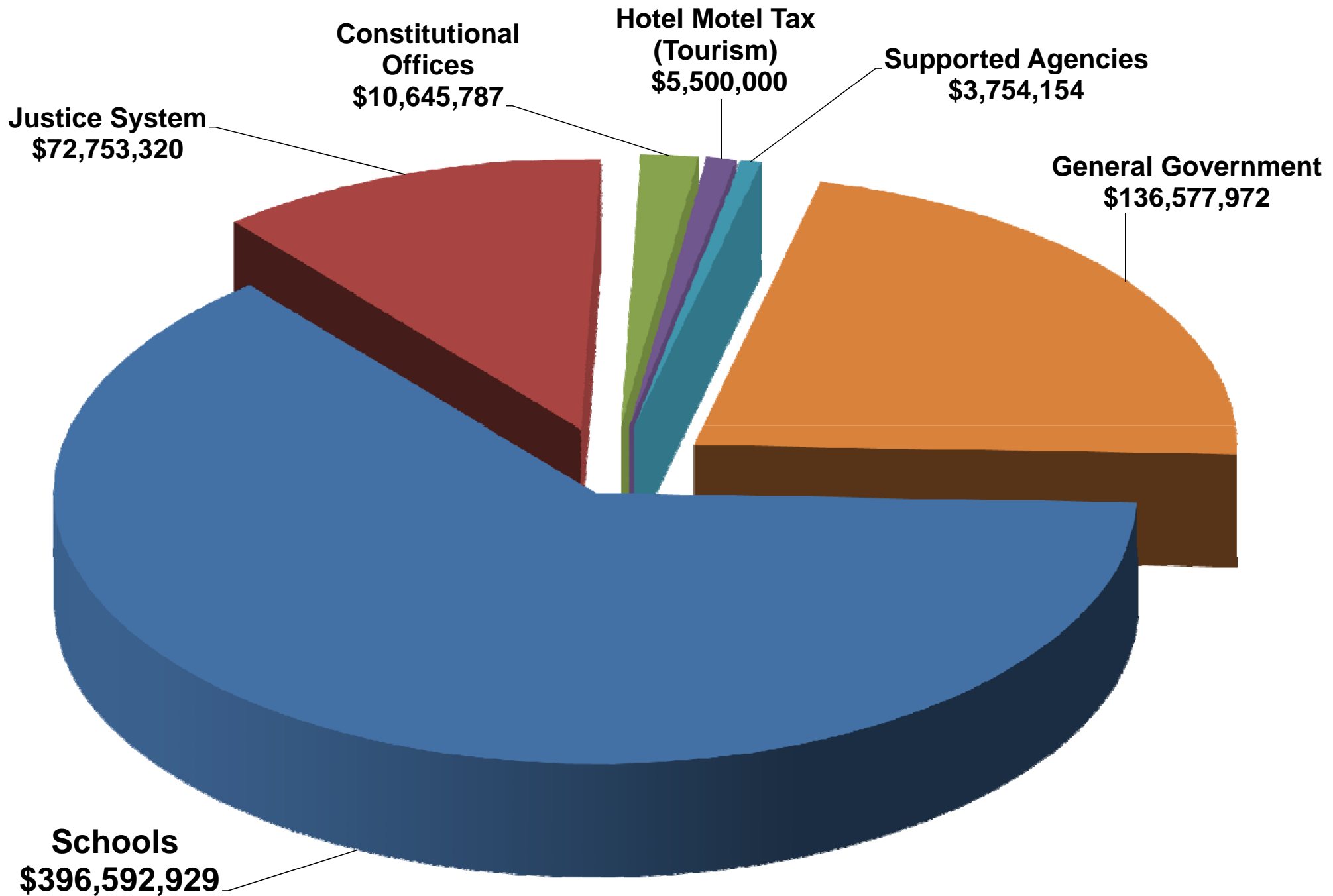
Where does \$625,825,087 come from?

- Property Taxes and Trustee Excess fees
- Local Sales Tax
- Hotel/Motel Tax
- Constitutional Offices
- State of Tennessee
- Federal Funds
- Unincorporated Sales Tax
- Other Sources

Where does money go?

Schools	\$396,592,929
Justice System	\$ 72,753,320
Constitutional Offices	\$ 10,645,787
Hotel Motel Tax (Tourism)	\$ 5,500,000
Supported Agencies	\$ 3,754,154
General Government	\$136,577,972

Where does money go?

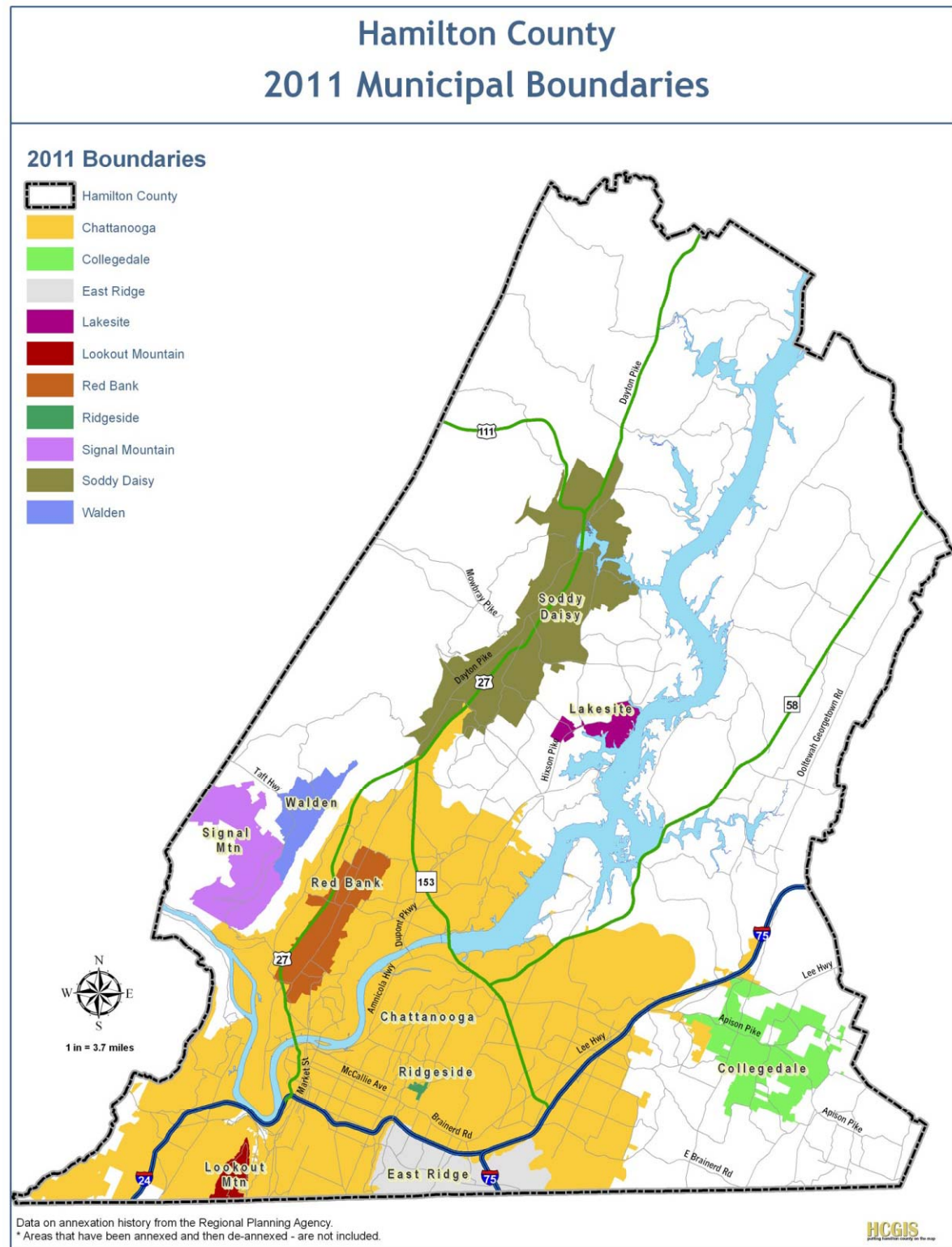


General Government

Debt Service (Education 65-70%)	\$65,332,106
Emergency Services	\$11,611,739
Health Department	\$19,585,730
Public Works	\$17,020,107

There are 10 municipalities inside Hamilton County.

Property tax comes from all owners.



Municipalities offer enhanced services to its residents.

These enhanced services include:

- ✓ Police
- ✓ Fire Protection
- ✓ Garbage Services
- ✓ Sewer Service
- ✓ Other Services

NOTE: People who own property inside a municipality are required to pay a second property tax for these enhanced services.

Property Tax Assessment in Unincorporated Hamilton County

Residential	\$1,960,335,970
-------------	-----------------

Commercial	\$ 107,833,605
------------	----------------

Total	\$2,068,169,575
-------	-----------------

Chattanooga

Residential	\$1,788,463,085
Commercial	\$2,303,127,070
Total	\$4,091,590,155

Unincorporated Hamilton County

Residential	\$1,960,335,970
Commercial	\$ 107,833,605
Total	\$2,068,169,575

Home Rule 1995 County Powers Act

(Amended 1998, 2003, 2006, 2011)

This act states counties have,
“the right to exercise certain
powers already granted to
municipalities.”

The background of the slide features a large, faint, circular seal of Hamilton County, Tennessee. The seal contains the text "HAMILTON COUNTY" at the top and "TENNESSEE" at the bottom. In the center of the seal is a detailed illustration of a landscape with a river, a bridge, and a building.

**This means
Hamilton County can
do almost everything
municipalities can do.**

Including:

- **Collect garbage.**
- **Enforce ordinances by fines, forfeitures and penalties.**
- **Enact \$500 fine for violation of county rules and regulations.**
- **Install traffic signals.**

