



Plumber's Advisory Group Meeting
September 4, 2009

Ultimate Goal

- Overall Requirement for PSLP.
 1. Audit (Evaluate) Every Gravity Service Lateral in the WWTA Service Area (Approximately 24,000 WWTA Customers that meet this Criteria)
 2. Repair/Replace those with Inflow and Infiltration (I/I)
 3. Database Documenting Steps 1 & 2

Meeting Purpose

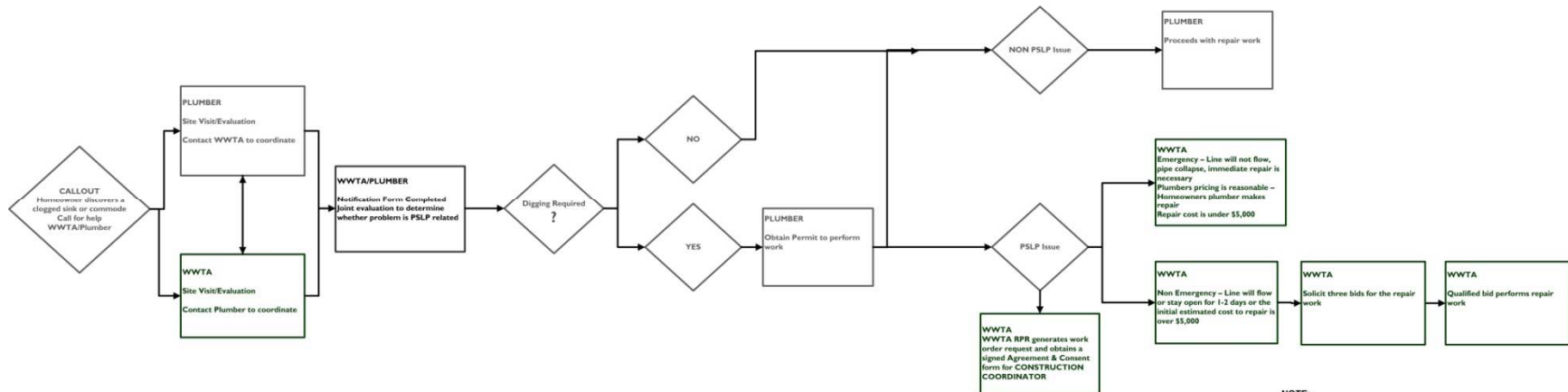
- Work Through WWTA Staff's Proposal for Using the Plumbers to Make I/I Repairs.
- We will Discuss the Plan that the WWTA Staff has Developed to Allow the Plumbers to do the Work.
- Will Not Discuss the Plumbers Proposal(s).
- Will Not Discuss the WWTA Option to use a Contractor for Repair/Construction.
- The Purpose of this Group is Not to Discuss Pricing or How Pricing is Going to Be Determined.

Possible Scenarios

- Standard PSLP Planned Activities.
 - WWTA Contractor Performs Pre-Evaluation
 - Plumber Performs Repair/Construction Work
 - WWTA Contractor Performs Post-Evaluation
- Call Outs (Emergencies)
 - Home Owners Have a Clog.
 - Home Owner calls a Plumber or the WWTA.
 - May or May Not be PSLP Related.

Current Call Out (Emergency) Procedure

CALLOUT RESPONSE PROCESS



NOTE:
Homeowner is eligible for PSLP related repairs ONLY after notification to the WWTA is provided either through the Notification Form or through the use of the Permit Process

Moving Forward

- WWTA Solicits Evaluation Contractor
- Plumbers are Pre-Qualified to Perform PSLP Repair/Construction
- Rotation Process is Created
- Establish PSLP Repair/Construction Rates
- Permit Remains Unchanged but Used for Notification

Proposed Call Out (Emergency) Procedure

- 20/100 Calls per day

(All Calls Go/Referred to Plumbers)

1. Rule One – Get the Water Flowing!

2. Rule Two – Meet Overall Requirement

- a) Audit (Evaluate) Every Gravity Service Lateral in the WWTA Service Area (Approximately 24,000 WWTA Customers that meet this Criteria)
- b) Repair/Replace those with Inflow and Infiltration (I/I)
- c) Database Documenting Steps 1 &2

- Plumber is Called and Responds (No I/I Discovered)

If No I/I or Main Line Problem Discovered, then acquire data and provide proof for audit . WWTA will pay for Camera Work, Audit Data, and Reporting.

Proposed Call Out (Emergency) Procedure (6 Month Pilot)

- Plumber is Called and Responds (If I/I Discovered)
 1. Contact WWTA
 2. Develop Recommendation for Addressing I/I
 3. Present Recommendation & Present Supporting Documentation (Video – Color Footage, DVD Format)
 4. Complete Audit Form & Obtains Home Owner Consent
 5. WWTA Determines the Scope Of Work (SOW)
 6. Plumber is Offered Opportunity to Perform SOW at Established Rates

Proposed Call Out (Emergency) Procedure

- Plumber is Called and Responds (If I/I Discovered)
 7. If Plumber Rejects Opportunity – WWTA Selects the Next Qualified Plumber to offer the Opportunity to
 8. SOW is Performed
 9. Testing is Performed/Documented
 10. The Evaluation Contractor is Scheduled
 11. The Evaluation Contractor to Perform the Post-Evaluation (GPS Locating, CCTV Inspection Using Granite)

Standard PSLP Planned Activities

- **WWTA Contractor Performs Pre-Evaluation**
 - SOW is Established by WWTA
 - Work to be Performed is Grouped for Assignment to a Qualified Plumber (at Established Rate)
- **Plumber Performs Repair/Construction Work**
- **As With Call Out Procedure:**
 1. Testing is Performed/Documented
 2. The Evaluation Contractor is Scheduled
 3. The Evaluation Contractor to Perform the Post-Evaluation (GPS Locating, CCTV Inspection Using Granite)

Standard PSLP Planned Activities

- Pilot Areas - Signal Mtn & East Ridge (6 Month Pilot)
- Selection of Plumbers by Lottery
- Groups of 5 to 15 Project Sites
- Established Rates/Payment Scheme
 1. Scenario A – Relatively Easy Job
 2. Scenario B – Moderately Difficult Job
 3. Scenario C – Difficult Job
 4. Scenario D - Trenchless Technologies Scenario (P/B or Lining)

Warranty

- The Home Owner is Responsible for Testing the Line at Year 5
- Warranty Includes Workmanship
- Length of Warranty ?
 1. 1 Year or
 2. 5 Year?
- Warranty Excludes
 1. Homeowner Negligence
 2. Acts of God?

Participation Requirements

Proposed List of Requirements to be on WWTA approved list

- **Proposed by the Plumber's Advisory Group**
- **Licensed Master Plumber – *Must have the ability to pull a Hamilton County Permit***
- **Bonded – *Appropriately***
- **Liability Insurance with 1,000,000 limit**
- **Must have workman's comp. insurance**
- **Must have a W-9 on file with WWTA**
- **Employees working on WWTA jobsites must be supervised by a licensed plumber**
- **Must complete WWTA training program**
- **Must be Drug Free Workplace**

Participation Requirements

- *The Plumbers will provide - Background check of employees who will work on WWTA jobsites (WWTA will look at Hamilton County HR Policy on How to Use the Result of the Background Check)*
- Companies must have a developed safety program in use
- Trucks must have company names on them even if it is a magnet
- Employees must have name tag (photo ID)
- Company can not have 3 or more unresolved claims with the WWTA or the BBB in a six month period.
- Employees must have a uniform or adhere to a dress code
- As Professionals, to Understand the Program and to Work Sincerely as Partners with the WWTA to Accomplish all Program Requirements
- *County Requirement Regarding DBEs (WWTA will look at Hamilton County Policy)*